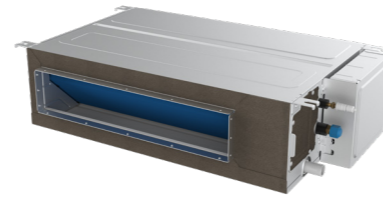


Slim Duct



Specification-50/60Hz

Model	Indoor		ARVLD-H22/NR1DY	ARVLD-H28/NR1DY	ARVLD-H36/NR1DY	ARVLD-H45/NR1DY	ARVLD-H56/NR1DY	ARVLD-H71/NR1DY
Capacity	Cooling	kW	2.2	2.8	3.6	4.5	5.6	7.1
	Heating	kW	2.6	3.2	4.0	5.0	6.3	8.0
Electric Data	Power Supply	V~,Hz,Ph	220~240,50(60),1	220~240,50(60),1	220~240,50(60),1	220~240,50(60),1	220~240,50(60),1	220~240,50(60),1
	Rated Power	W	40	40	40	90	90	110
Performance	Air Flow Volume(Hi/Mi/Lo)	m³/h	480/380/330	480/380/330	500/410/350	730/590/500	730/590/500	900/710/590
	Noise Level(Hi/Mid/Low)	dB(A)	32/28/26	32/28/26	33/29/27	34/30/28	34/30/28	34/30/28
	External Static Pressure(ESP)	Pa	13(0~50)	13(0~50)	13(0~50)	13(0~50)	13(0~50)	13(0~50)
Dimension (WxDxH)	Net	mm	700x470x200	700x470x200	700x470x200	1000x470x200	1000x470x200	1300x470x200
	Packing	mm	1005x580x275	1005x580x275	1005x580x275	1305x580x275	1305x580x275	1610x580x275
Weight		kg	18.5/22	18.5/22	19/22.5	23.5/28	23.5/28	28.5/33
Pipe Diameter	Liquid Side	mm(inch)	6.35(1/4)	6.35(1/4)	6.35(1/4)	6.35(1/4)	6.35(1/4)	9.52(3/8)
	Gas Side	mm(inch)	9.52(3/8)	9.52(3/8)	12.7(1/2)	12.7(1/2)	12.7(1/2)	15.88(5/8)
	Drainage	mm(inch)	R3/4in(DN20)	R3/4in(DN20)	R3/4in(DN20)	R3/4in(DN20)	R3/4in(DN20)	R3/4in(DN20)
Stuffing Quantity	20/40/40H	unit	176/368/414	176/368/414	176/368/414	136/288/324	136/288/324	104/232/261

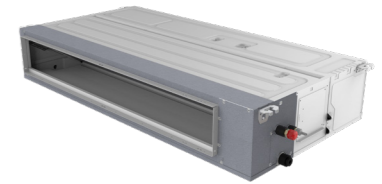
Specification-50Hz

Model	Indoor		ARVLD-H22/4R1Y	ARVLD-H28/4R1Y	ARVLD-H36/4R1Y	ARVLD-H45/4R1Y	ARVLD-H56/4R1Y	ARVLD-H71/4R1Y
Capacity	Cooling	kW	2.2	2.8	3.6	4.5	5.6	7.1
	Heating	kW	2.6	3.2	4.0	5	6.3	8
Electric Data	Power Supply	V~,Hz,Ph	220~240,50,1	220~240,50,1	220~240,50,1	220~240,50,1	220~240,50,1	220~240,50,1
	Rated Power	W	25	25	25	35	35	45
Performance	Air Flow Volume	m³/h	550	550	600	850	850	1150
	Noise Level	dB(A)	32	32	33	34	34	34
	External Static Pressure(ESP)	Pa	10(30)	10(30)	10(30)	10(30)	10(30)	10(30)
Dimension (WxDxH)	Net	mm	700x470x200	700x470x200	700x470x200	1000x470x200	1000x470x200	1300x470x200
	Packing	mm	1005x580x275	1005x580x275	1005x580x275	1305x580x275	1305x580x275	1610x580x275
Weight		kg	18.5/22	18.5/22	19/23	23.5/28	23.5/28	29/34
Pipe Diameter	Liquid Side	mm(inch)	6.35(1/4)	6.35(1/4)	6.35(1/4)	6.35(1/4)	6.35(1/4)	9.52(3/8)
	Gas Side	mm(inch)	9.52(3/8)	9.52(3/8)	12.7(1/2)	12.7(1/2)	12.7(1/2)	15.88(5/8)
	Drainage	mm(inch)	R3/4in(DN20)	R3/4in(DN20)	R3/4in(DN20)	R3/4in(DN20)	R3/4in(DN20)	R3/4in(DN20)
Stuffing Quantity	20/40/40H	unit	176/368/414	176/368/414	176/368/414	136/288/324	136/288/324	104/232/261

Notes:

- Cooling Capacity: Indoor temperature 27°C DB/19°C WB; Outdoor temperature: 35°C DB/24°C WB.
- Heating Capacity: Indoor temperature 20°C DB; Outdoor temperature: 7°C DB/6°C WB.
- Piping Length: Equivalent piping length: 7.5m, level difference: 0m.
- Sound level is measured at 1.4m below the unit.
- The above designs and specifications are subject to change without prior notice. Final specifications please refer to technical specification provided by sales representative.

Mid ESP Duct



Specification-50/60HZ

Model	Indoor		ARVMD-H45/NR1DM	ARVMD-H56/NR1DM	ARVMD-H71/NR1DM	ARVMD-H80/NR1DM	ARVMD-H90/NR1DM
Capacity	Cooling	kW	4.5	5.6	7.1	8.0	9.0
	Heating	kW	5.6	6.3	8.0	9.0	10.0
Electric Data	Power Supply	V~,Hz,Ph	220~240,50/60,1	220~240,50/60,1	220~240,50/60,1	220~240,50/60,1	220~240,50/60,1
	Rated Power	W	110	110	125	125	150
Performance	Air Flow Volume(Tu/Hi/Mid/Low)m³/h		1000/920/790/700	1000/920/790/700	1680/1350/1100/950	1680/1350/1100/950	1710/1400/1120/950
	Noise Level(Hi/Mid/Low)	dB(A)	39/37/35	39/37/35	40/38/36	41/39/37	41/39/37
	External Static Pressure(ESP)	Pa	50(0-150)	50(0-150)	50(0-150)	50(0-150)	50(0-150)
Dimension (WxDxH)	Net	mm	1000x700x245	1000x700x245	1000x700x245	1000x700x245	1000x700x245
	Packing	mm	1230*830*300	1230*830*300	1230*830*300	1230*830*300	1230*830*300
Weight	Net/Gross	kg	30/36	30/36	30/36	30/36	32/38
Pipe Diameter	Liquid Side	mm(inch)	9.52	9.52	9.52	9.52	9.52
	Gas Side	mm(inch)	15.88	15.88	15.88	15.88	15.88
	Drainage	mm(inch)	R3/4in(DN20)	R3/4in(DN20)	R3/4in(DN20)	R3/4in(DN20)	R3/4in(DN20)
Stuffing Quantity	20/40/40H	unit	72/151/164	72/151/164	72/151/164	72/151/164	72/151/164

Specification-50/60HZ

Model	Indoor		ARVMD-H100/NR1DM	ARVMD-H112/NR1DM	ARVMD-H125/NR1DM	ARVMD-H140/NR1DM	ARVMD-H150/NR1DM	ARVMD-H160/NR1DM
Capacity	Cooling	kW	10.0	11.2	12.5	14.0	15.0	16.0
	Heating	kW	11.2	12.5	14.0	16.0	17.0	18.0
Electric Data	Power Supply	V~,Hz,Ph	220~240,50/60,1	220~240,50/60,1	220~240,50/60,1	220~240,50/60,1	220~240,50/60,1	220~240,50/60,1
	Rated Power	W	150	230	230	230	250	250
Performance	Air Flow Volume(Tu/Hi/Mid/Low)m³/h		1710/1400/1120/950	2300/1900/1600/1400	2300/1900/1600/1400	2300/1900/1600/1400	2400/2000/1700/1500	2300/1900/1600/1400
	Noise Level(Hi/Mid/Low)	dB(A)	42/40/38	44/42/40	44/42/40	44/42/40	45/43/41	44/42/40
	External Static Pressure(ESP)	Pa	50(0-150)	50(0-150)	50(0-150)	50(0-150)	50(0-150)	50(0-150)
Dimension (WxDxH)	Net	mm	1000x700x245	1400x700x245	1400x700x245	1400x700x245	1400x700x245	1400x700x245
	Packing	mm	1230*830*300	1630x830x300	1630x830x300	1630x830x300	1630x830x300	1630x830x300
Weight	Net/Gross	kg	32/38	41/48	41/48	41/48	41/48	43/50
Pipe Diameter	Liquid Side	mm(inch)	9.52	9.52	9.52	9.52	9.52	9.52
	Gas Side	mm(inch)	15.88	15.88	15.88	15.88	15.88	15.88
	Drainage	mm(inch)	R3/4in(DN20)	R3/4in(DN20)	R3/4in(DN20)	R3/4in(DN20)	R3/4in(DN20)	R3/4in(DN20)
Stuffing Quantity	20/40/40H	unit	72/151/164	49/98/112	49/98/112	49/98/112	49/98/112	49/98/112

Notes:

- Cooling Capacity: Indoor temperature 27°C DB/ 19°C WB; Outdoor temperature: 35°C DB/ 24°C WB.
- Heating Capacity: Indoor temperature 20°C DB; Outdoor temperature: 7°C DB/ 6°C WB.
- Piping Length: Equivalent piping length: 7.5m, level difference: 0m.
- Sound level is measured at 1.4m below the unit.
- The above designs and specifications are subject to change without prior notice. Final specifications please refer to technical specification provided by sales representative.